

# INTRODUCTION TO MEDICAID HCBS WAIVERS

Copyright by Julie Reiskin, CCDC

# INTRODUCTION

- This training will be an introduction to the many HCBS waivers offered to eligible Coloradans in need of long term care who wish to receive services in the community, rather than an institution.

# WHAT ARE MEDICAID WAIVERS

Copyright by Julie Reiskin,  
CCDC

- For several decades the federal government has allowed the states to “waive” certain provisions of the federal law.
- This creates a waiver—which is an agreement between the state and federal governments and becomes a way to deliver specific services to specific populations.

# LOTS OF WAIVERS

- Today we will focus on HOME AND COMMUNITY BASED SERVICES waivers



# WHAT DOES THE STATE HAVE TO DO?

- **Prove cost effectiveness**—states must prove every year to the federal government through a formula that they are not spending more on the whole group by serving them in the community than they would by serving them in a nursing facility. This does not mean that every individual can prove specific cost savings because the calculation is aggregate.
- Meet **quality assurance** in six areas

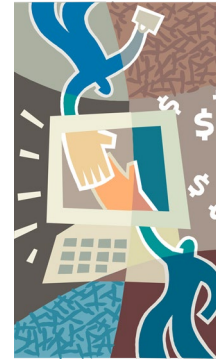
# QUICK QUIZ-WHAT IS A WAIVER?

- A) A deal between the state and federal government
- B) Allows the state to decide who they want to serve and allows them to get out of basic Medicaid requirements
- C) Allows the state to save money by improving creativity
- D) Is someone who waves to people on the highway



# ADMINISTRATION

- Coloradans access Medicaid waiver services through Case Management Agencies
- Recent changes with this: “Case Management Redesign”
- Now: 1 Case Management Agency for each region to administer waiver services. More on this later



# HCBS WAIVERS: ADULTS

**CIH**

Complementary  
and Integrative  
Health

**SLS**

Supported Living  
Services

**BI**

Brain Injury

**EBD**

Elderly, Blind, and  
Disabled

**CMHS**

Community  
Mental Health  
Support

**HCBS-DD**

Developmental  
Disabilities

# HCBS WAIVERS: Kids

**CES**

Children's  
Extensive Support

**CHCBS**

Children's Home  
and Community  
Based Services

**CHRP**

Children's  
Habilitation  
Residential  
Program

**CLLI**

Children with Life  
Limiting Illness